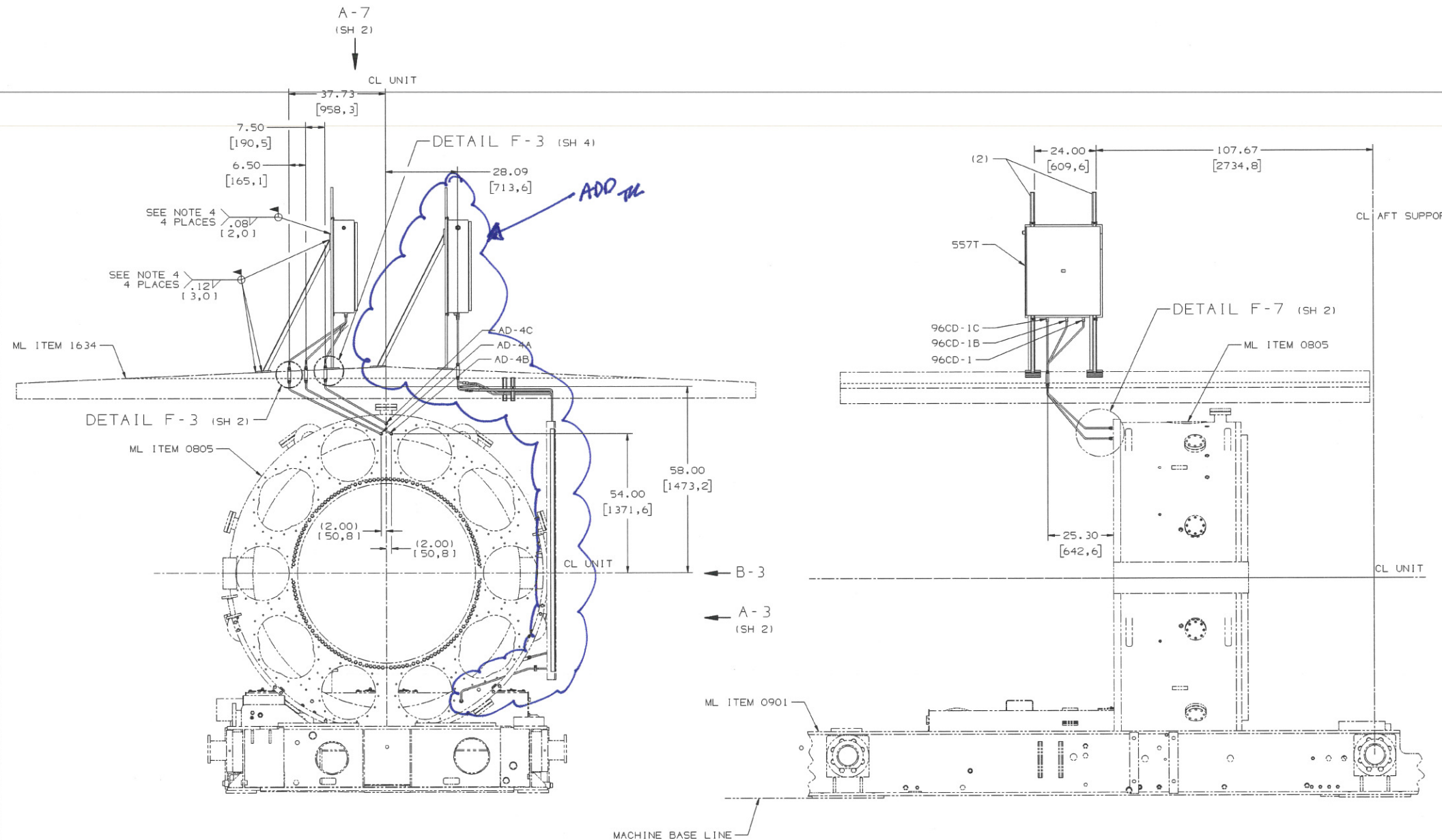


NOTES :

1. GENERAL MACHINING APPLIED PRACTICES ARE PER 348A9200.
2. PIPING APPLIED PRACTICES ARE PER 351A3700.
3. PIPING WELDS ARE PER PBA-AG3, FILLER MATERIAL IS PER COLUMN AU-L UNLESS OTHERWISE SPECIFIED IN THIS DOCUMENT.
4. STRUCTURAL WELDS ARE PER PBA-AG1, FILLER MATERIAL IS PER COLUMN AB UNLESS OTHERWISE SPECIFIED.
5. INSTALL AND SUPPORT TUBING PER 215A4435 AND 362A1025.
6. INSTALL TUBE UNIONS AS REQUIRED.
7. TUBE RUNS ARE ILLUSTRATIVE ONLY.
8. CLEAN AND PAINT PER ML ITEM 0108.
9. FLOW DIRECTION IS DESIGNATED WITH AN ARROW SYMBOL.
10. SLOPE .25 INCH PER FOOT MINIMUM.
11. LINEAR DIMENSIONS IN BRACKETS () ARE IN MILLIMETERS AND ARE FOR REFERENCE ONLY. ALL DIMENSIONS OF THE MANUFACTURED PART(S) MUST EQUAL THE DECIMAL-INCH DIMENSIONS AND, WHEN REQUIRED, BE RECORDED IN DECIMAL-INCH UNITS. MILLIMETER DIMENSIONS SHOWN MAY NOT CONVERT EXACTLY FROM INCHES DUE TO DIMENSIONAL ROUNDING.



VIEW B-3 (C-5)
(FOR JB34 ONLY)

- (G7) MSDM (SST TRANSDUCER BOX ONLY)
KG/Cm² GAUGES
- (G6) MSDM (CS TRANSDUCER BOX ONLY)
KG/Cm² GAUGES
- (G5) MSDM (SST TRANSDUCER BOX ONLY)
BAR GAUGES
- (G4) MSDM (CS TRANSDUCER BOX ONLY)
BAR GAUGES
- (G3) MSDM (SST TRANSDUCER BOX ONLY)
KPA GAUGES
- (G2) SUMMARY FOR OFF BASE LAGGING
- (G1) MSDM (CS TRANSDUCER BOX ONLY)
KPA GAUGES

6 INSTR. CLN & PNT	ML ITEM 0108
5 INSTR. ASSY-TUBE & FTG	215A4435
4 WELDING-GENL SPEC	PBA-AG1
3 WLD FAB OF GTRB PP	PBA-AG3
2 APPLD PRAC, PP	351A3700
1 APPLD PRAC, GENL MACH	348A9200
IT. IDENT	
LIST OF COMPLEMENTARY DOCUMENTS	

REV	REV STATUS
4	3
2	1
1	SH

BOM ISSUED

SIGNATURES	DATE	GE Power Generation
GRAND PUGAZH	03-07-18	
CHORR BALAS	03-07-21	
CHORR A.B. COSTA	03-07-25	
CHORR A.B. COSTA	03-07-25	
QUALITY FRANK J. NORTH II	03-07-25	
APPLIED PRACTICES 348A9200		
REV 117E4462	SCALE NONE	SHEET 1

© COPYRIGHT 2003 GENERAL ELECTRIC COMPANY
PROPRIETARY INFORMATION-THIS DOCUMENT CONTAINS
PROPRIETARY INFORMATION OF GENERAL ELECTRIC
COMPANY AND MAY NOT BE USED OR DISCLOSED TO
OTHERS, EXCEPT WITH THE WRITTEN PERMISSION OF
GENERAL ELECTRIC COMPANY.

PRESSURE TRANSDUCER ARR
TURBINE (DUEL FUEL)
FIRST MADE FOR ML-7A1PEA1-16 557T

119E9021

8

7

6

5

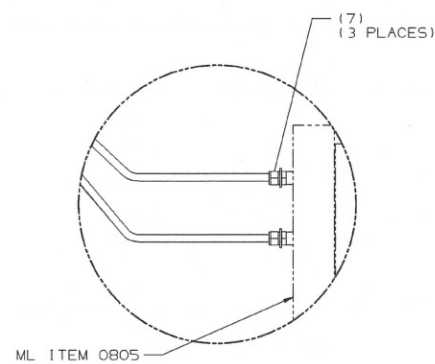
4

3

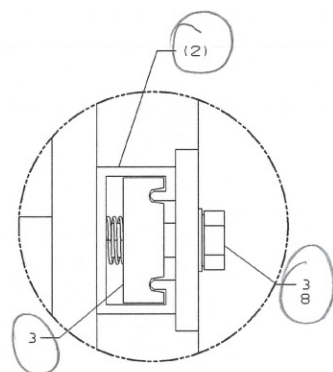
2

1

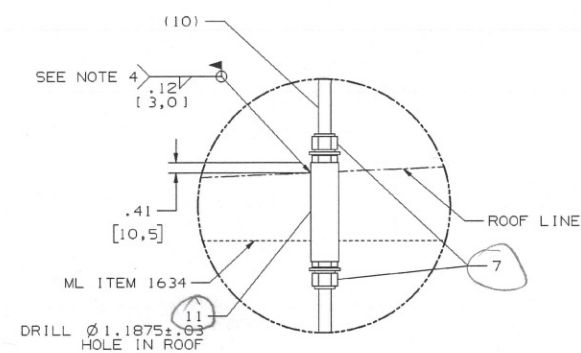
REV	DESCRIPTION	DATE	APPROVED
1	REVISE ON CAD ONLY UG PART: SD7078-557T-A0001 (SPEC: 119E9021)		



DETAIL F-7 (E-3 SH 1)
3 PLACES

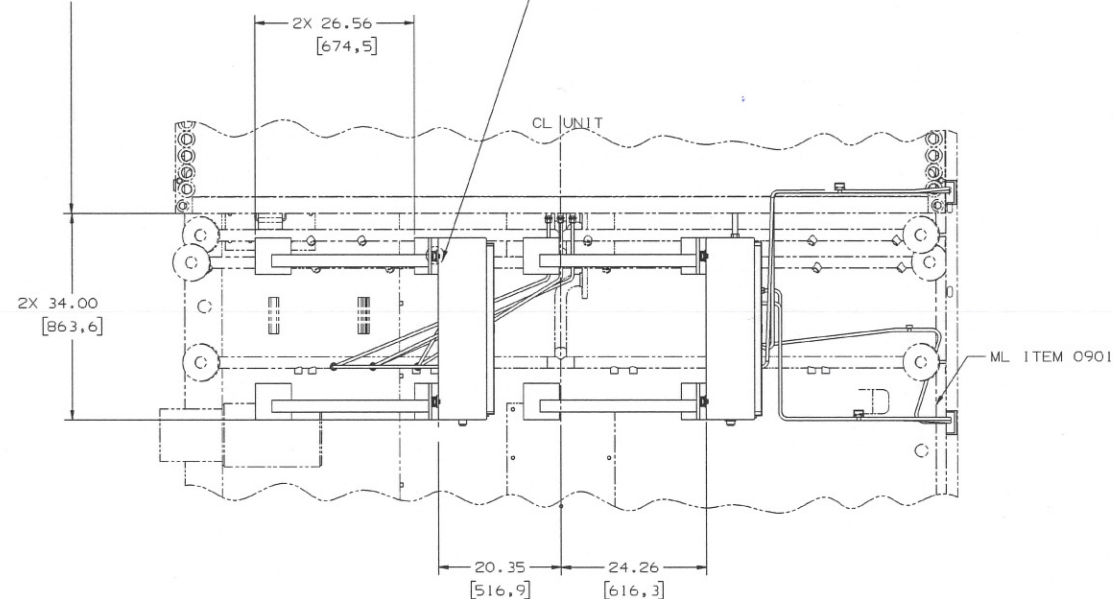


DETAIL F-5 (D-6 SH 1)
(8 PLACES)

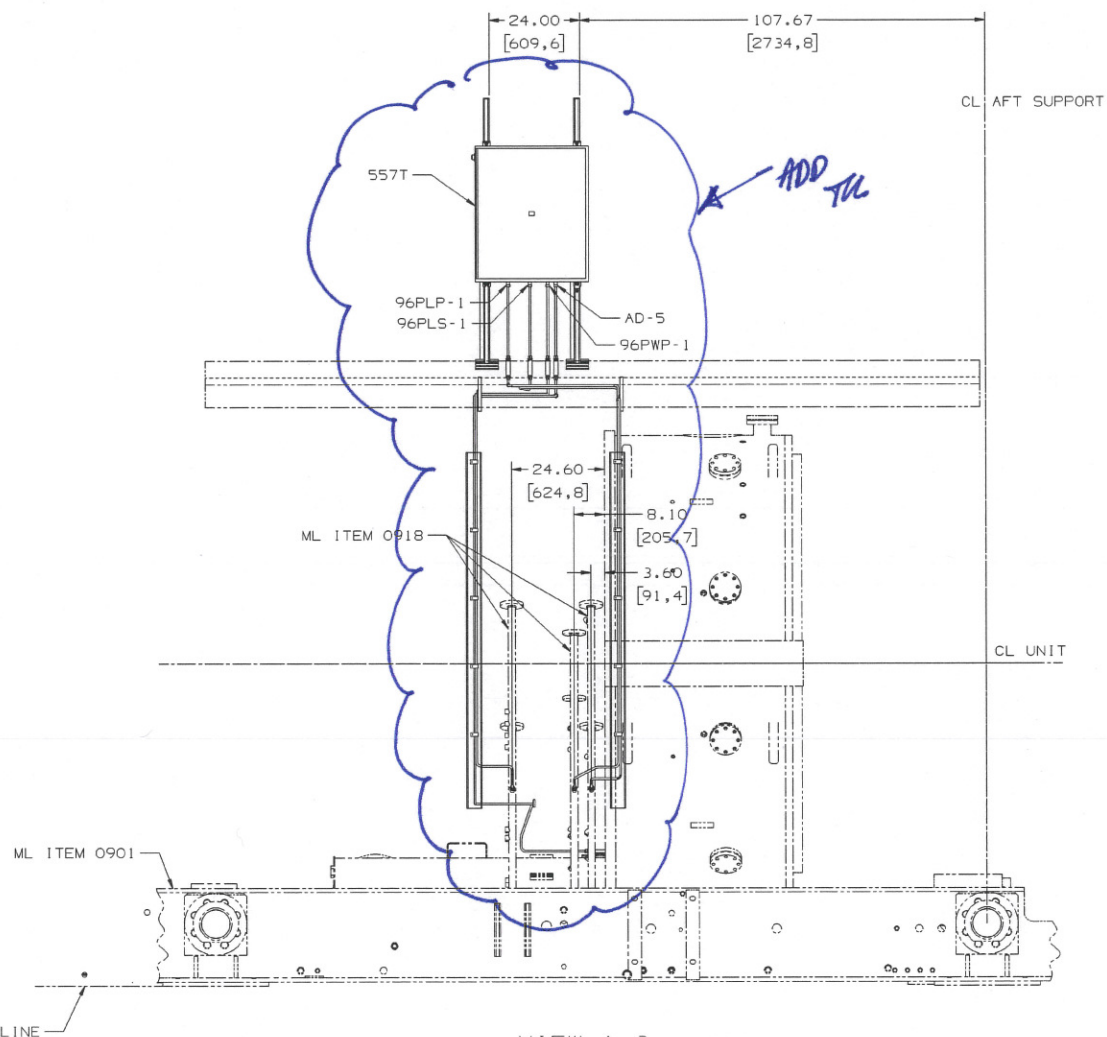


DETAIL F-3 (D-8 SH 1)
(7 PLACES)

101.40
[2575,6]
TO CL AFT SUPPORT



VIEW A-7 (F-7 SH 1)



VIEW A-3 (C-4 SH 1)
(FOR JB34A ONLY)

© COPYRIGHT 2003 GENERAL ELECTRIC COMPANY

PROPRIETARY INFORMATION-THIS DOCUMENT CONTAINS
PROPRIETARY INFORMATION OF GENERAL ELECTRIC
COMPANY AND MAY NOT BE USED OR DISCLOSED TO
OTHERS, EXCEPT WITH THE WRITTEN PERMISSION OF
GENERAL ELECTRIC COMPANY.

GENERAL ELECTRIC COMPANY	SIZE	CAGE CODE	DWG NO
GE Power Generation	119E9021		119E9021
DRAWN PLOAZH	03-07-18		
ISSUED A.D. COSTA	03-07-25	SCALE NONE	SHEET 2

8

7

6

5

4

3

2

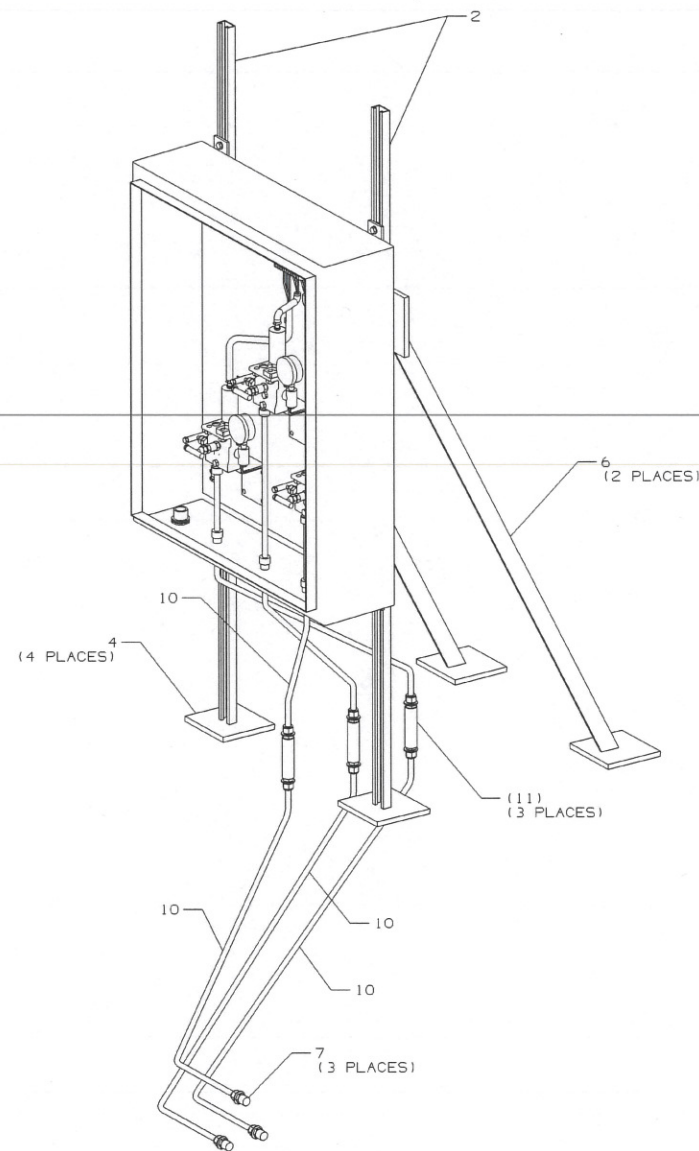
1

E 119E9021 3 1

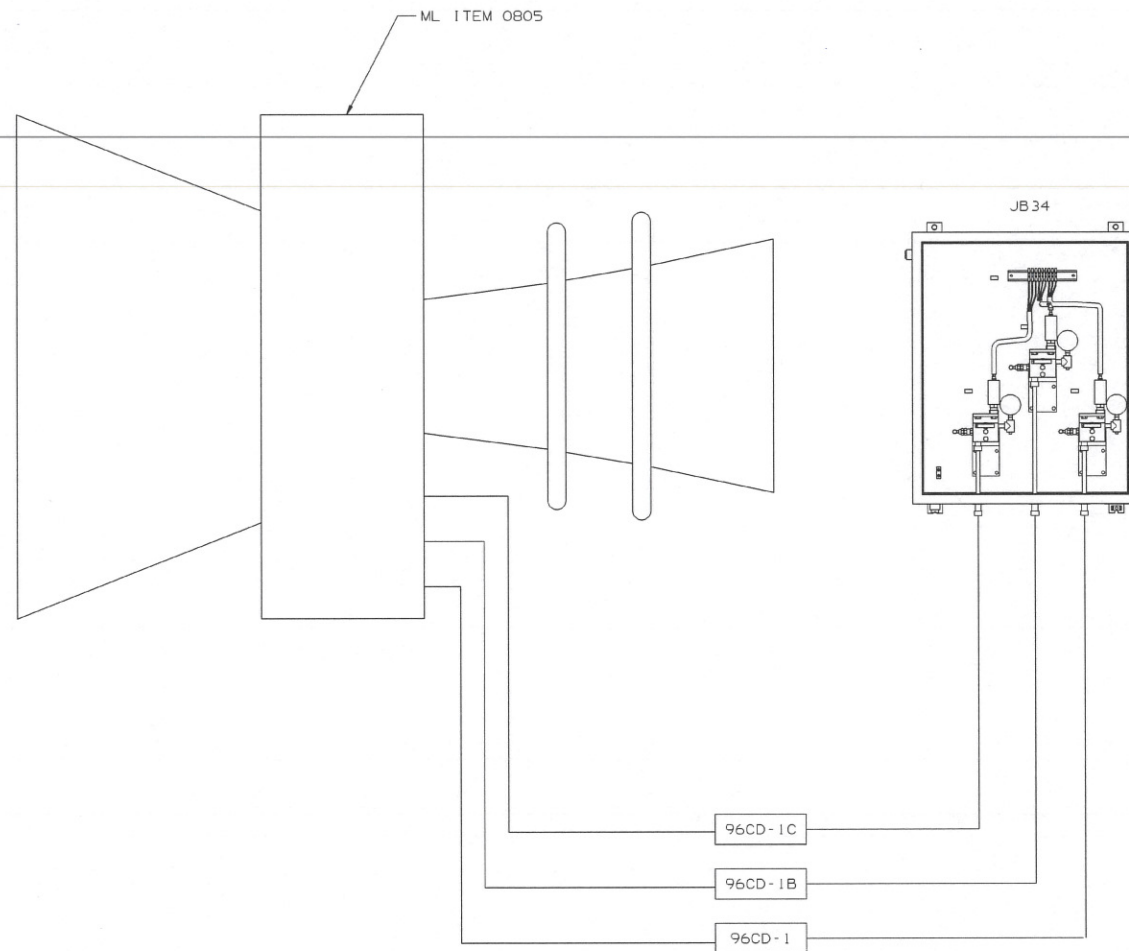
REVISIONS			
REV	DESCRIPTION	DATE	APPROVED

REVISE ON CAD ONLY
UG PART: SD7078-557T-A0001
(SPEC: 119E9021)

EXISTING



ISOMETRIC VIEW
(FOR JB34 ONLY)



SCHEMATIC DIAGRAM
(FOR JB34 ONLY)
(G1, G3 THRU G7)

© COPYRIGHT 2003 GENERAL ELECTRIC COMPANY

PROPRIETARY INFORMATION-THIS DOCUMENT CONTAINS
PROPRIETARY INFORMATION OF GENERAL ELECTRIC
COMPANY AND MAY NOT BE USED OR DISCLOSED TO
OTHERS, EXCEPT WITH THE WRITTEN PERMISSION OF
GENERAL ELECTRIC COMPANY.

GENERAL ELECTRIC COMPANY
DRAWN: PUGAZH
ISSUED: A.D. COSTA

SIZE
CASE CODE
DWS NO.

119E9021

SHEET 3

ISOMETRIC VIEW
(FOR JB34A ONLY)

DETAIL F-3 (F-6 SH 1)
(8 PLACES)

SCHEMATIC DIAGRAM
(FOR JB34A ONLY)